



CAMDEN GIVING

WMC FOOD FUND 2022



INTRODUCTION

The WMC Food Fund 2022, provided an opportunity to test new ideas and support organisations to take the 'next step' on from what they currently do.

The fund was based on the theme of 'wraparound support' – this was intentionally broad and so we funded a range of interpretations of what wraparound support looks like.

Through this partnership, a panel of Camden citizens decided which organisations received funding.

2022

S N A P S H O T

PANELLISTS RECRUITED **10**

17 ORGANISATIONS FUNDED

TOTAL FUNDING GIVEN

£112,599



WHO WAS FUNDED

ABBEY COMMUNITY CENTRE

Food redistribution, promoting nutrition and community building with residents experiencing poverty.

CALTHORPE COMMUNITY GARDEN

Transforming a community food bank to a community food hub, focusing on intergenerational work.

CASTLEHAVEN COMMUNITY ASSOCIATION

Training and organising local people in growing their own food collectively and at home.

DOORSTEP HOMELESS PROJECT

Providing store cupboard staples, once per month, to 40 homeless families.

FEAST WITH US

Communal dining sessions for people experiencing food poverty & homelessness.

FUTSAL STARS FOUNDATION

A rolling project of futsal and fitness holiday camps with healthy foods.

HELLO BEAUTIFUL

Provide cancer patients, the homeless and other vulnerable people access to meal plans and nutrition workshops.

KCBNA

Providing weekly meal provision for vulnerable, housebound and isolated people.

MAIDEN LANE COMMUNITY CENTRE

Supplying culturally-appropriate emergency food parcels to residents.

NW5 PROJECT

Provide nutritious meals to young people, and youth-work provision.

REFUGEE COMMUNITY KITCHEN

Supply of raw produce to create culturally appropriate nutritious meals.

THE SAPPHIRE WELLBEING ACADEMY

A food voucher programme dedicated to supporting young people and families.

THE SHERIFF CENTRE

Free food store, additional food stock and volunteer expenses.

SIDINGS COMMUNITY CENTRE

Access to a new range of fresh and chilled food, advice, and healthy budgeted cooking.

SWISS CHURCH

Popular breakfast service for people affected by homelessness and poverty.

UNITY WORKS

People with a learning disability plan, prepare and cook 50 meals a week and delivered to Castlehaven Food bank.

URBAN COMMUNITY PROJECTS

Supplying food for healthy lunch packs to 'just getting by' families.



STORY 1

ABBEY COMMUNITY CENTRE

With funding from the WMC Food Fund, Abbey Community Centre were able to expand their reach by approximately 20% last year. Their work included befriending schemes, cooking classes, community lunches and distribution of weekly food parcels and vouchers.



Befriending schemes for people sufferings with long term conditions and disabilities were also enabled by the funding. Additional services were able to continue such as staff-led community check-ins and social check-ins with wraparound advice and sign-posting for families, cooking classes, a community fridge and men's cooking classes.

STORY 2

SAPPHIRE COMMUNITY GROUP

Funding received meant that dedicated and consistent training could be provided to young people to subsequently open and run a soup kitchen.



As a result, 1,278 people have received food, facilitating for the coming-together of communities.

STORY 3

DOORSTEP HOMELESS PROJECT

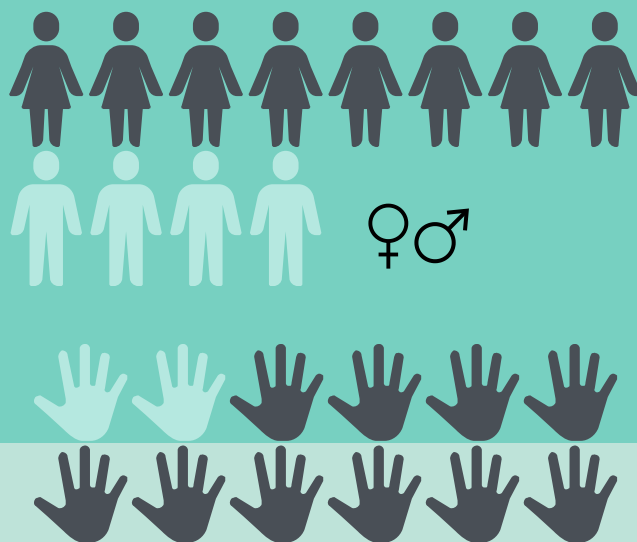


The fund meant that food was provided to vulnerable families on low income - 90% of which are also from a BAME background.

Community needs are also at the forefront of the cohesive approach which not only works to make sure no food is wasted, but also catering to individualised dietary, cultural and personal needs.

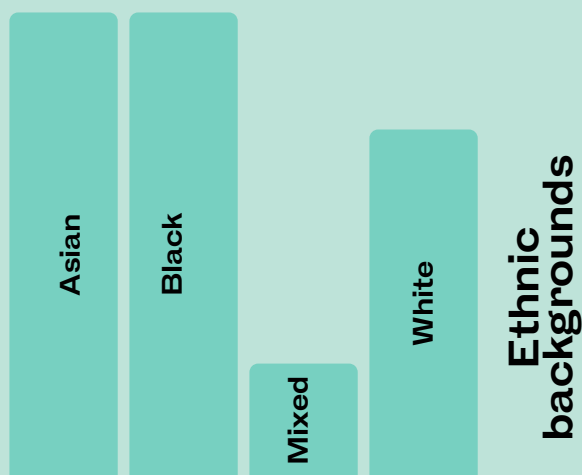
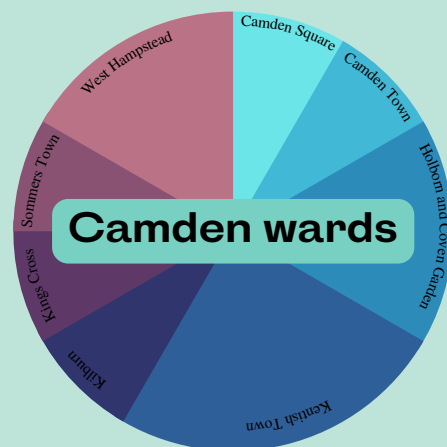
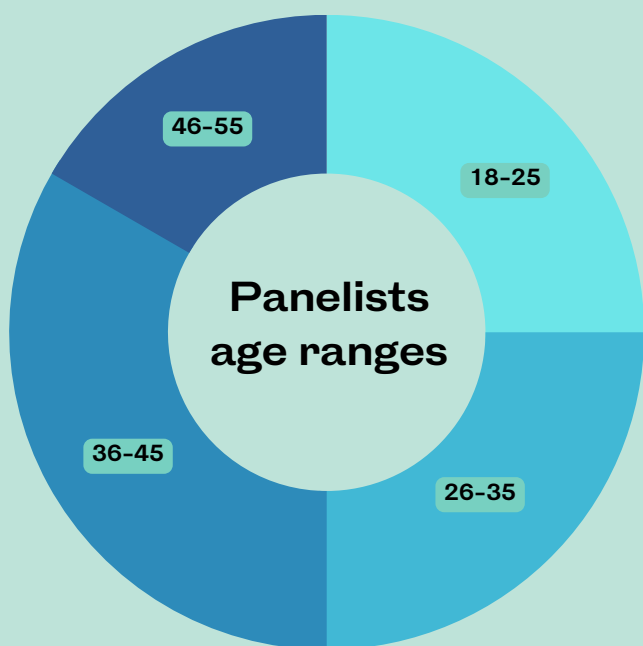
PANELLIST IMPACT

At Camden Giving each funding decision made is made using a participatory grant making model- more information on this can be found [here](#).



Panelists living with disabilities

We strongly believe that, not only does this result in better decisions being made, but also has positive impact for Camden Giving panellists themselves.



CONNECTIONS

We reconnected with the London Irish Centre through this work which has been great. We also connected with a company called Likewise, and Queens Crescent residents. Lots of planned partnerships in the works.

FEAST WITH US

There have been lots of new connections. Including with Camden Giving staff, with the Food Network team, with Age UK, with Mind in Camden, and with local councillors.

KCBNA

Yes, there have been connections made with 'Think and Do', 'Poverty Food Summit', 'Springboard Academy' and 'Zen Project' - all through Camden Giving connects

REFUGEE COMMUNITY KITCHEN

With Edith Neville School and Training Link, who have been sign-posting Afghan volunteers for ESOL classes. These were enabled by Camden Giving.

URBAN COMMUNITY PROJECTS

WHAT HAVE WE LEARNT?

INSIGHT 1

Asking community panellists, some of whom will have experienced some level of food insecurity themselves in their lifetimes, was emotionally challenging and required an increased awareness of our pastoral responsibilities.

INSIGHT 2

Our position in Camden means we were able to source funding for this funding round from both the local authority and local donors.

WHAT WILL DO DIFFERENTLY NEXT TIME?

ACTION 1

Camden Giving will be looking at ways to make grants around food insecurity less competitive.

ACTION 2

Camden Giving will continue to try and grow our relationship with private donors and businesses to supplement funds we get from Camden Council.

WHAT'S NEXT

A lot of uncertainty remains as communities recover from the pandemic and we enter a challenging time for residents as we look to recover as a borough from the pandemic. The pressures on food banks continue to rise and the impact of Covid-19 continues to be dramatically felt by those in need of support with food

It is a priority for Camden Giving to address the root causes of food insecurity including but not limited to:

- Food prices increasing by 19.1 per cent in the 12 months to March 2023, the sharpest jump since August 1977
- Council rents increasing by almost twice as much as usual because inflation is soaring at a 40-year high
- 20.2% of people working in London earning less than the London Living Wage.

As a funder, it is our mission to be here to meet that need in 2023 and beyond. Holding true to our notion, that "we all have something to give", it is now more than ever that giving is integral to the survival of our communities.



THANK YOU

We wouldn't be able to facilitate this incredible work without the support of Camden Council and our donors who are willing to step up and be good neighbours.

Thank you all so much, not only for your financial contributions, but also for being so wonderful to work with.

